

Instruction manual

WIRELESS INTERCONNECTABLE SMOKE ALARM WITH A WITH BUILT-IN 10-YEAR 3V BATTERY



Model: ASD-10QR

CE 17
EN14604:2005/AC 2008
vfdb 14/01
1134-CPR-199
DoP no: 10QR16
RED



CE 1134	EN14604:2005/AC 2008	
	Essential characteristics:	Performance:
Fito Products BV Molenvliet 22 3961 MV Wijk bij Duurstede The Netherlands	Nominal activation conditions/sensitivity, response delay (response time) and performance under fire conditions:	Passed
	Operational reliability:	Passed
17 1134-CPR-199	Tolerance to supply voltage:	Passed
	Durability of operational reliability and response delay, temperature resistance:	Passed
Optical smoke detector, alerts you in the event of fire or smoke, and is suitable for residential buildings.	Durability of operational reliability, vibration resistance:	Passed
	Durability of operational reliability, humidity resistance:	Passed
	Durability of operational reliability, corrosion resistance:	Passed
	Durability of operational reliability, electrical stability:	Passed

RETAIN THESE INSTRUCTIONS FOR FUTURE USE!

These instructions contain important information for correct installation and use of your smoke detector. Please read this information carefully and retain these instructions for future reference.

SAFETY ISSUES:

- Do not paint to the detector and do not cover it.
- Never install smoke detectors in rooms with a high humidity, such as bathrooms, showers, kitchens and saunas.
- Test your smoke alarm regularly, once a month and always after a period of absence. Test by pressing the test button for at least 2 seconds, a loud alarm will follow. Keep a distance of at least 50 cm. between the alarm and your ears.
- Never open the smoke alarm, this will invalidate the warranty.

Characteristics certified by: ANPI	
Ceiling mount	YES
Battery powered	YES
Battery lifetime 10 years	YES
Individual Alarm Indicator	YES
Alarm silence facility	YES
Suitable for installation in a caravan	NO
Wireless interconnectable up to 24 pcs.	YES

IMPORTANT INFORMATION

Correct usage will ensure you have valuable extra time to escape. Every correctly installed smoke detector will increase your potential escape time.

- A smoke detector is not a fire-prevention measure.
- Install the smoke detector in the correct place, if possible in the middle of the ceiling.
- WARNING:** Read carefully chapter "Never fit a smoke detector"
- Keep the smoke detector out of the reach of children.
- Test the unit on a monthly basis and after a period of absence. When the alarm does not sound, have your smoke alarm inspected by the service point or when the smoke alarm is more than 10 years old discard the alarm.
- CAUTION:** Never test with fire!
- Clean the detector regularly (once a month) using the soft brush from a vacuum cleaner. In addition the smoke alarm can also be cleaned using a moist cloth.
- If the detector emits a beeping sound every 40 seconds, this means that the battery is nearly flat and that you should replace the smoke detector.
- The lifespan of smoke detectors is 10 years.
- A false alarm can be silenced by pressing the test and silence button.
- You can make your Model ASD-10QR smoke detector less sensitive for 10 ± 2 minutes by pressing the test button shortly. The detector will nonetheless sound the alarm if the quantity of smoke is too significant.
- You can also test and switch on the hush feature by using the ASD-RRC. This is the optionally available wireless remote control.

IMPORTANT INFORMATION IN CASE OF ALARM IN THE EVENT OF A FIRE

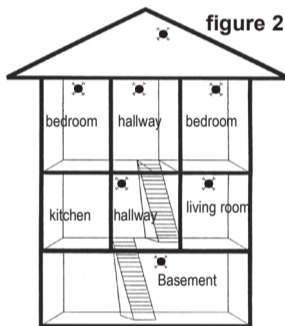
- Plan **TWO** escape routes and practice these with all members of the family.
- Agree upon a location, where everyone goes to in case of a fire.
- In the event of a fire:**
- Leave the building immediately and go to the agreed location.
- Make sure everyone has left the building.
- Close the doors behind you and never open a warm door. In case of a warm door, choose a different escape route.
- In the event of considerable build-up of smoke, crawl out of the building keeping as close to the floor as possible.
- Wherever possible, breathe through a cloth (preferably moist), or else hold your breath as much as you can. The majority of deaths and injuries are caused by smoke inhalation rather than fire itself.
- Call the fire brigade outside or at the neighbours.
- NEVER** go back into a burning building.
- Additional information can be obtained at the local fire department.

SPECIFICATIONS:

RF frequency: 868.100 (<1% duty cycle)
RF Codes: 65535
RF Power: +14 dBm max
RF range: 100 m. min. open field
Battery life: 10 years under normal conditions
Battery type: Sealed, Lithium, AA, 3V
Consumption: ≤ 12 µA standby
≤ 90 mA in alarm
Operating temperature: 0°C tot + 55°C
Operating humidity: < 93% RH at 40° C
Alarm sound level: >85dB op 3 meter
Hush time: 10 ± 2min.
Certifications: EN 14604, CE, RED

POSITIONING THE SMOKE DETECTOR

RECOMMENDED LOCATIONS:



Optimal protection:

In all occupied areas such as bedrooms, living room, study and the escape route as hallway, basement and attic.

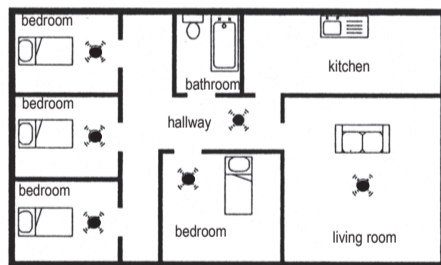


figure 1

Maximum protection:

- Smoke detector in all rooms (with the exception of bathrooms, kitchen, garages, etc.)
- Heat detectors can be installed in bathrooms, kitchens, airing cupboards, utility rooms, etc. within 5 metres of a potential source of fire.

- The smoke detector should preferably be installed in the middle of the ceiling, at least 50 cm from the wall.
- In the case of pitched roofs, install the smoke detector on the sloping wall, at least 90 cm (measured vertically) from the ridge of the roof.
- Ensure that the detector can always be reached for testing and cleaning.

Never fit a smoke alarm:

- In bathrooms, kitchens, shower rooms, garages, etc. Places where a smoke detector may go off needlessly due to condensation, normal smoke or gases. A smoke detector should be fitted at least 5 metres from such sources of smoke.
- Places where the temperature may exceed 55° C or fall below 0° C, e.g. attics, just above a fireplace, etc.
- In the vicinity of (or adjacent to) decorative objects, doors, sockets, lights, fittings, windows, wall ventilators, etc. which could mean that smoke does not reach the smoke detector. Minimum 50cm away.
- Surfaces that are usually warmer or colder than the rest of the room. Differences in temperature can prevent smoke from reaching the detector.
- Adjacent to or directly above stoves or heaters.
- In very high or difficult to reach places. This makes it hard to reach the detector to test or clean it.
- In very dusty or dirty places. Accumulation of dust will prevent smoke from reaching the smoke chamber and in time will lead to a false alarm.
- Within 1 metre of dimmer switches and wiring. Some dimmer switches can trigger a fault in the detector.
- Within 1.5 metres of fluorescent lights. Electrical impulses can adversely affect the functioning of the detector.

- Outdoors and in spaces where a large number of insects are found. Small insects in the unit's detection chamber can disrupt the functioning of the detector.

The labels on the rear side of the detector contain important information.

HOW TO USE THE ASD-10QR:

Wireless interconnecting the smoke alarms:

The ASD-10QR is a wireless device. Each smoke alarm can be the sender or the receiver. To interconnect a few smoke alarms the unique RF code must be generated in one of them and set to the others All ASD-10QR smoke alarms in a house, apartment or property should be set to the same RF Code. It is not recommended to interconnect more than 24 smoke alarms.

Generating the unique RF Code:

- Remove all smoke alarms from bases.
- Press and hold the test button for about 4 sec. on one of them (randomly chosen) and release the button when the red LED will lit. This smoke alarm (Master) has chosen one of the 65.535 possible RF codes. The red LED on the Master will be lit until the interconnect procedure is over.
- In order to set the generated code to the other smoke alarms (Slaves) push the Test button on each of them. The successful setting of the code to the Slave will be accompanied with blinking of the red LED. You have two minutes to inter connect all smoke alarms, after two minutes the red LED will extinguish indicating that the interconnect procedure has ended.
- To end the interconnect procedure you can also press the test button on the Master or fasten the Master on to the base. The red LED will extinguish indicating that the interconnect procedure has ended.

How to disconnect a smoke alarm:

If you need to disconnect one smoke alarm carry out **Generating the unique RF Code** procedure.

How to add a smoke alarm:

To add a smoke alarm you need to carry out the **Generating the unique RF Code** procedure on all the smoke alarms you want to interconnect.

Testing the smoke alarms and the interconnection:

Install all interconnected smoke alarms to bases. Press and hold on the Test button on one of them (Test mode). After the period of 10 to 30 sec. all interlinked smoke alarms will go to the Remote Alarm mode. Upon releasing the Test button, the other alarms will stay in the Remote Alarm for 5-10 sec.

The installation:

- Choose a location that satisfies the conditions as described in: Positioning the smoke detector.
- Remove the base plate of the detector by turning the base plate anti-clockwise (to the left).
- Mark the mounting holes in the base plate and drill the holes (use a 6 mm drill). If you do not use the dowels, then use a 3 mm drill. Screw the base plate securely onto the ceiling. Make sure that the base plate is tight against the ceiling so that no air circulation above the smoke alarm is possible, which could impede smoke detection. If the opening is too large, this must be remedied by the use of a filler. If you use the double sided tape, make sure the base and the surface you want to install the smoke alarm is grease free. Attach the double sided tape to the base and then the base to the ceiling.
- Place the smoke detector on the base and turn it until the smoke detector clicks into the base. Turn the smoke detector clockwise to secure the smoke detector and activate it. A melody will sound to confirm the activation.
- Test your smoke alarms by following the procedure as described in chapter: "Testing the smoke alarms and the interconnection"

ATTENTION: The smoke alarm should be covered or temporarily removed during renovation work or structural alterations. Once the day's work is complete, clean the smoke detector with the soft brush from a vacuum cleaner and then activate it again. Always test it by pressing the test button once it has been reinstalled.

WARNING: covering the smoke alarm causes loses its functionality.
WARNING: Do not paint the smoke alarm. Also never test the smoke alarm with fire or cigarettes.

CAUSES OF FALSE ALARM

The smoke detector can be activated by steam, condensation, dust, smoke and small insects. These are to be prevented as much as possible. See chapter "Never fit a smoke alarm". If a smoke alarm frequently gives a false alarm, it might be necessary to install the detector in another location. Additional information can be found on our website www.fito.nl FAQ. When a smoke alarm does not functioning correctly, contact your supplier or Fito Products BV - www.fito.nl

MAINTENANCE

- Test your smoke alarm regularly, once a month and always after a period of absence. See "Testing the smoke alarms and the interconnection"
- Clean the detector regularly (once a month) using the soft brush from a vacuum cleaner. In addition the smoke alarm can also be cleaned using a moist cloth.
- Never allow the detector to come into contact with fluids.

LIMITATIONS OF SMOKE DETECTORS

In countries where they are commonly in use, smoke detectors have contributed to reducing deaths and injuries. Independent bodies have established that they were insufficient in around 35% of fires, namely in the following situations:

- Where the battery had been removed or was not working. For that reason, you should test the unit regularly.
- Where smoke is not able to reach the detector in the event of a fire, meaning the unit cannot be set off. Examples include a fire on another floor where there is no smoke detector, a fire behind closed doors, a fire in a chimney or smoke being blown away from the detector. For that reason, smoke detectors are recommended in all rooms, or at any rate on every floor.
- Where the alarm is not heard. A person may not be woken by the alarm if that person had consumed excess alcohol and/or drugs.
- A few fires are not always detected on time, e.g. smoking in bed, if there is no smoke detector in the bedroom. In the case of escaping from gas or violent explosions, improperly storing explosive products and flammable liquids (petrol, paint, methylated spirit, etc.), electrical faults, acids, children playing with matches (fire).
- The lifespan of smoke detectors is 10 years.

PRODUCT WARRANTY

If used and maintained properly, the manufacturer guarantees this product against material and/or manufacturing defects for a period of 5 years from the original date of purchase. Exceptions include damage arising from accidents or misuse. If the product becomes defective within the stated period, then it will be repaired or replaced free of charge. Please do not open the smoke alarm or attempt to repair the product yourself or tinker with it, which will invalidate the warranty.

WARNING: Unscrewing the smoke alarm invalidates the warranty.

DOP (Declaration of Performance)

The DoP can be downloaded on our website www.fito.eu

INSTRUCTIONS FOR REMOVAL

Do not dispose of your old detector in the bin, but rather hand it in to a local collection point for small, domestic waste.



EUROPEAN PRODUCT

EUROPEAN SUPPLIER:

Fito Products BV
Molenvliet 22
3961 MV
WIJK BIJ DUURSTEDE
Nederland
info@fito.nl - www.fito.eu



figure 4



FUNCTION AND MEANING OF LIGHT AND SOUND SIGNALS:

Sound signal:	Red LED:	Function:
No signal	Flashes every 320 sec.	Standby mode Periodical automatic self-diagnostics
Long pulsating sound	Flashes every 0.5 sec.	Alarm status
Long lingering sound	Non	1 of the interconnected smoke alarms are in alarm
1 short signal every 40 sec.	Non	Low battery signal. The smoke alarm needs to be replaced.
2 short signals every 4 hour	Non	Low battery signal in one of the interconnected smoke alarms. This smoke alarm needs to be replaced.
3 short signals every 40 sec.	Non	Fault/ smoke chamber contamination
No signal	Flashes every 10 sec.	HUSH mode (Alarm muting, sensitivity reduction)
Long pulsating sound while pressing the test button.	Flashes every 0.5 sec.	Test mode: De smoke alarm is operates correctly. All interconnected and installed to the base smoke alarms will go to Remote Alarm status in 10 - 30 sec.
3 short signals while pressing the test button.	Flashes every 3 sec.	De smoke alarm does not operate correctly and needs to be replaced.